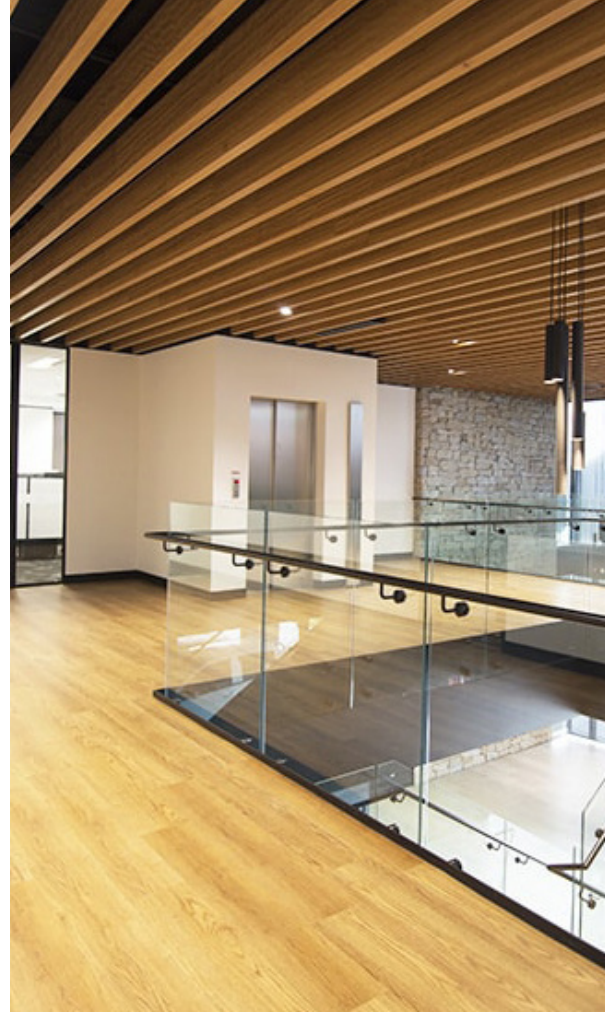


Journey to Transformation

Capability Statement

Discover - Design - Deliver





Contents

About Workspace 7	4
Workspace 7 Hybrid Approach	7
Workspace 7 Projects	8
Projects by Size	9
Workspace 7 Services	10
Workspace 7 People	13
Step by Step Process	16
Corporate Responsibility	19
Game Changing Strategy	21
Activity Based Working	22
Recent Projects	24
Workspace 7 Team Profile	29

About Wurfspace 7

Wurfspace 7 is an architecturally driven Workspace Design & Consultancy firm backed by a highly skilled in-house construction team.

A leader in its field, Wurfspace 7 engages with clients nationally to optimize workplaces and together create centers for organisational advancement and transformation.

Wurfspace 7 Corporate Transformations was established as the convergence of specialist workspace designers and strategic consultants passionate about revolutionising the future of office environments.

Our signature project delivery approach provides clients with best global practices in office architecture and workplace strategy, resulting in the delivery of truly compelling workspaces.


Vision and Strategy

Wurfspace 7's Vision and Strategy Meeting is a game-changing step specifically designed to equip you for success as you start your transformation journey.

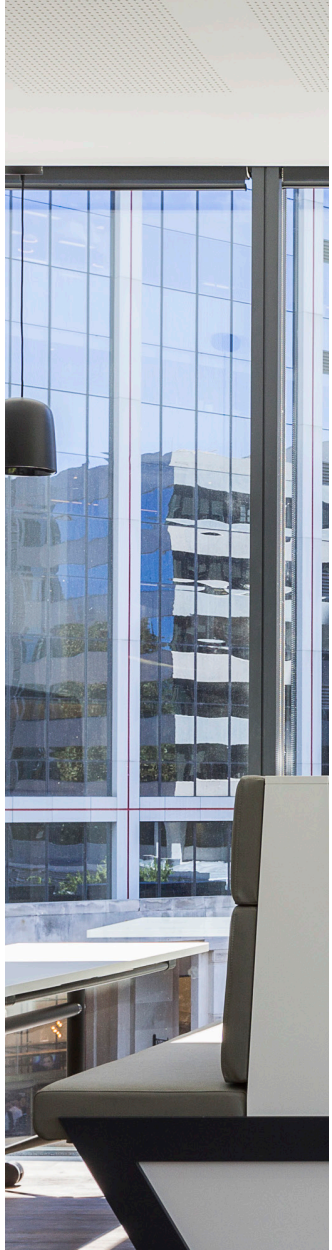
This key workshop connects your senior leaders, stakeholders and decision-makers with Wurfspace 7's expert Project Consultants, Creative Designers and Workplace Strategists to articulate a clear and unified vision for your project.

The central function of the Wurfspace 7 Vision and Strategy meeting is to develop clarity around ultimate project goals. This is achieved through our "What Matters Most™" ideation process, a unique gamification technique which draws out critical information in a simple, yet illuminating way.

Following this initial Visioning process, our Workplace Strategist provides additional evidence-based research and advice targeting the outlined goals, from which Wurfspace 7 can then set about developing a conceptual design translating your vision into a built reality.

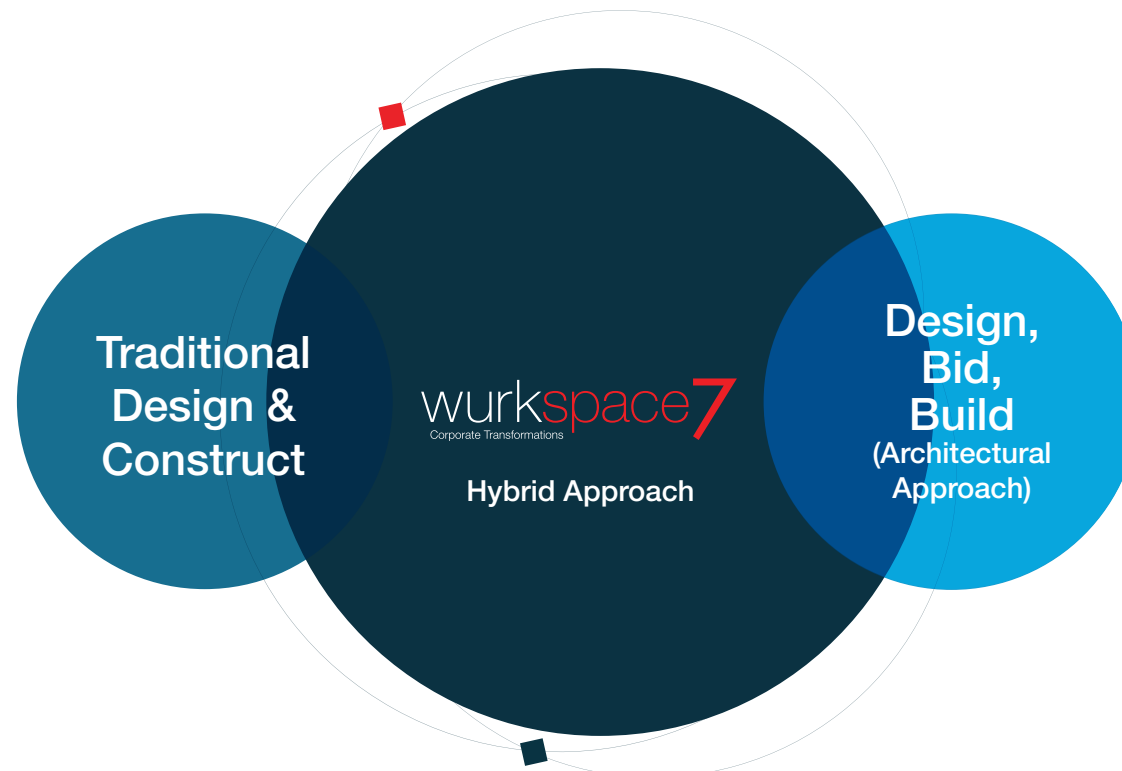


WA Police Union (WAPU)
Floor Area: 1250 m²
Industry: Professional Organisation
Delivery Model: Design + Construct



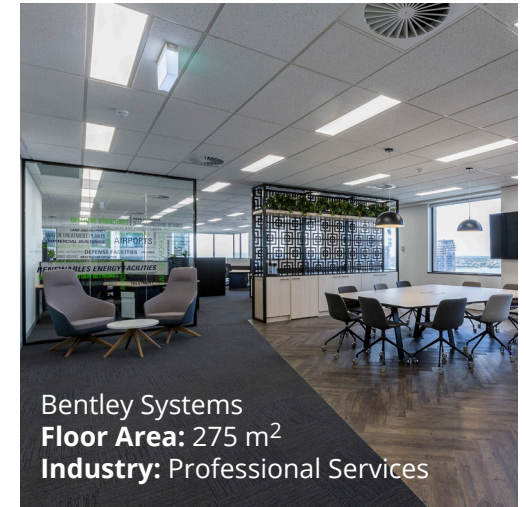
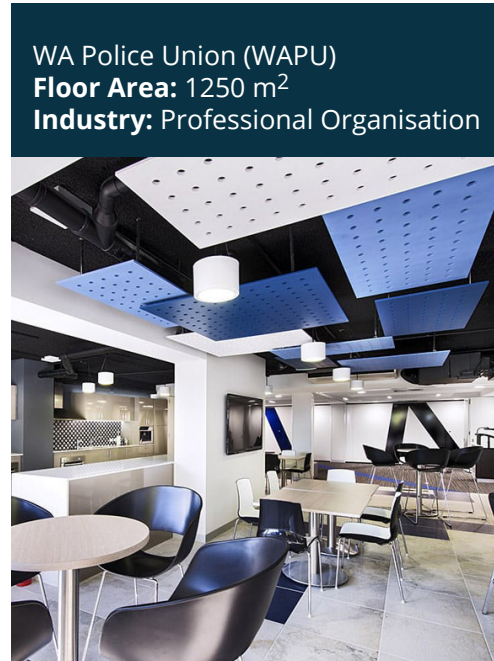
Discover
Design
Deliver

The benefits of Workspace 7 Hybrid Approach



Workspace 7 Approach combines the base methodologies of the traditional approach to project delivery with the enhanced benefit of a single source provider, which benefits our client by delivering projects without delay or competing interests.

Workspace 7 Projects



Projects by Size

PROJECT NAME	VALUE RANGE - \$	SIZE
Aquenta	7,000,000-8,000,000	7300m ²
WA Police Union	1,500,000-2,000,000	1250m ²
Jetset/ Travel world	1,500,000-2,000,000	860m ²
Byrnecut	1,000,000-1,500,000	2600m ²
Hanson	1,000,000-1,500,000	930m ²
Caterpillar	1,000,000-1,500,000	1300m ²
Undisclosed Company WA	1,000,000-1,500,000	1500m ²
Gallagher	750,000-1,000,000	2200m ²
Acquire GS	500,000-750,000	1000m ²
Cash Converters	500,000-750,000	450m ²
Lockton Sydney, 333 George	500,000-750,000	480m ²
Lockton Sydney, Martin Place	500,000-750,000	480m ²
Allied Group	500,000-1,000,000	1800m ²
Headspace Goulburn/ GPH	500,000-750,000	550m ²
Silver Chain Sydney, Seven Hills	500,000-750,000	520m ²
Amcom	500,000-750,000	720m ²
Aquatic Leisure	500,000-750,000	1100m ²
Bethanie Aged Care	500,000-750,000	2500m ²
Lockton Perth	500,000-750,000	750m ²
Thyssenkrupp	500,000-750,000	650m ²
Caterpillar Brisbane	250,000-500,000	450m ²
Nexus Risk	250,000-500,000	800m ²
Robert Bird	250,000-500,000	650m ²
Turner Townsend	250,000-500,000	300m ²
Zenitas	250,000-500,000	1500m ²
ABCO	250,000-500,000	860m ²
P2 Energy	250,000-500,000	830m ²
Toll Group	250,000-500,000	620m ²
Bentley Systems	100,000-250,000	275m ²
CHC Helicopters	250,000-500,000	725m ²

Wurkspace 7 Services

FINANCIAL FEASIBILITY SERVICE

Wurkspace 7 financial feasibility service software creates possible solutions to compare the possibilities and to meet different parameters such as budget for a client's workplace transformation.

OFFICE SPACE MARKET SEARCH

Finding the right space is key to procuring the best deal for an office. Wurkspace 7's Property Team can help the client narrow down the options available and make a savvy decision.

WORKSPACE CONSULTANCY

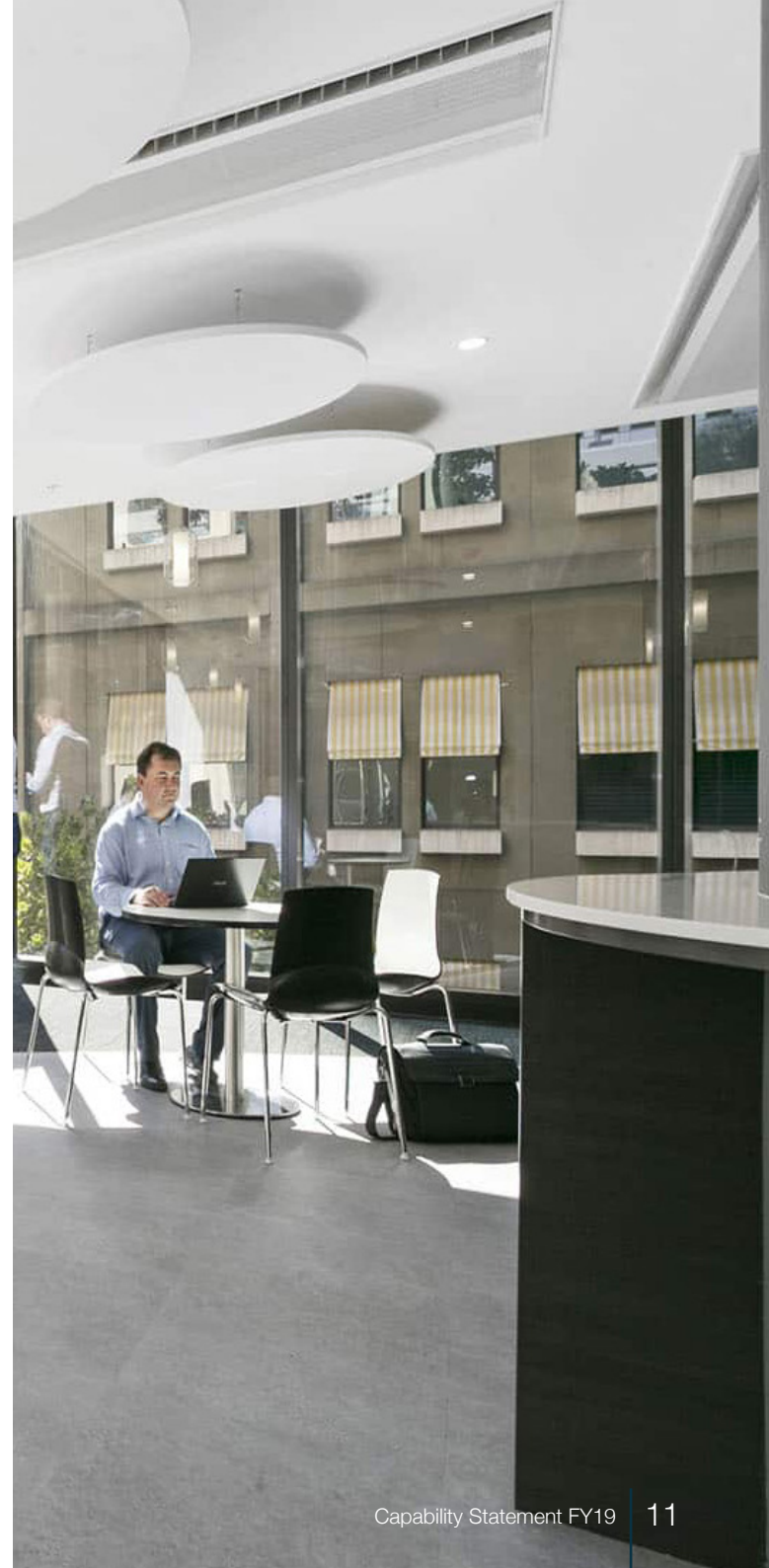
A carefully designed and built work environment has multiple positive flow-on effects for any business. Wurkspace 7's team of consultants can share their expertise with the client in a dedicated discovery process to find the best possible workspace design.

DESIGN AND CONSTRUCT

Design & Construct Project Delivery is globally increasing in popularity. Also known as design and build, it is a preferred strategy for large commercial fitout projects, especially difficult and design complex projects.



Imagine the Difference



A photograph of three women sitting at a white table in a modern office with large windows. The woman on the left has blonde hair and is wearing a white blazer. The woman in the middle has blonde hair in a ponytail and is wearing a black blazer over a white top. The woman on the right has dark hair and is wearing a red sleeveless top. They are all smiling and looking at each other. There are white mugs on the table. The background shows a cityscape with modern buildings.

“ Uniquely **qualified**,
extensively **experienced**,
passionate people, **driven**
to make a difference

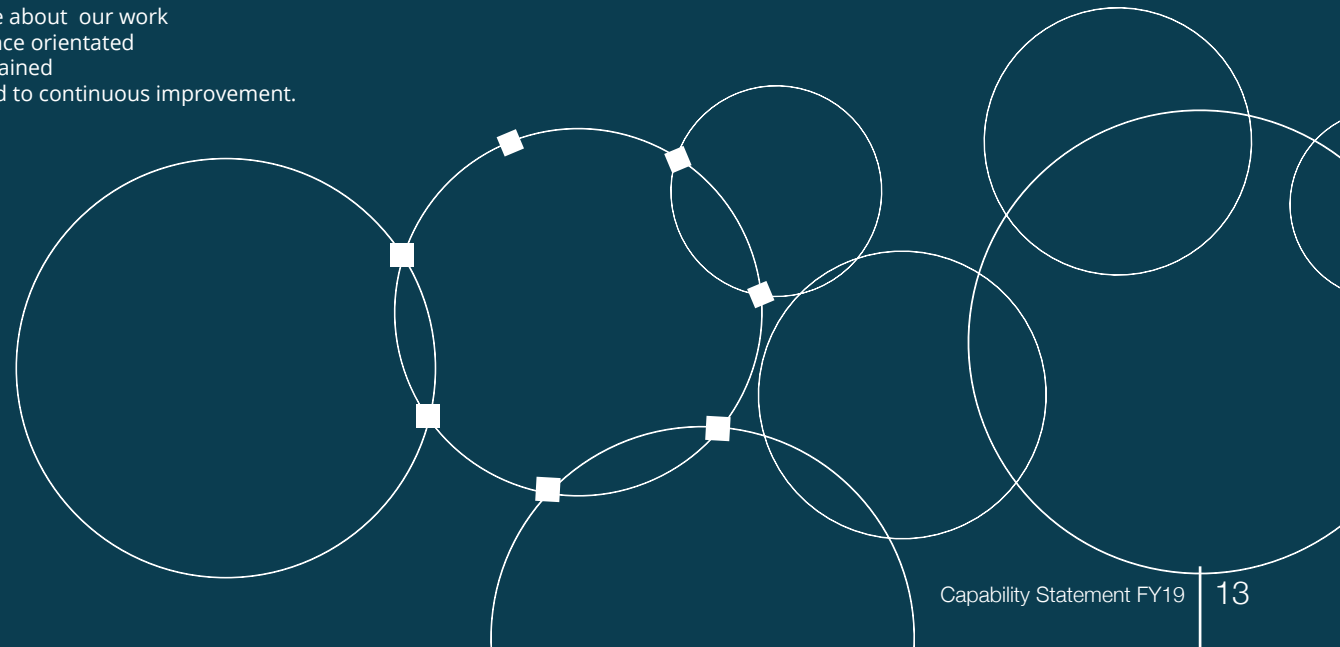
Workspace 7 People

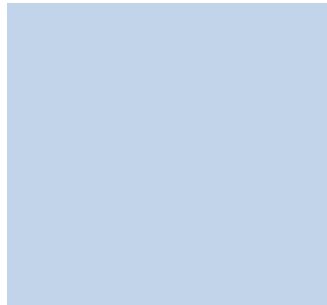
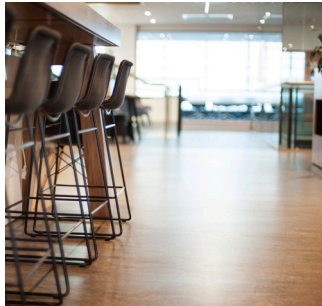
Workspace 7 has an unwavering commitment to deliver revolutionary workspace transformations for progressive organisations nationally. The Workspace 7 team has been carefully selected for their talent, ingenuity and skillbase so we can deliver meaningful and lasting transformations to our clients.

Workspace 7's dedicated team of Architects, Designers and Workspace Consultants are backed by our own in-house construction team, enabling us to deliver more for clients, faster.

Our team are:

- People with Purpose
- Guided by strong principles
- Focused on innovation
- Culturally driven
- Passionate about our work
- Performance orientated
- Globally trained
- Committed to continuous improvement.





Wurkspace 7's approach to corporate transformations is overtly Client oriented, with our ultimate goal of total Client satisfaction, realised through our 'Beyond' ideology, preserving continuing Client collaborations.

We are intent on determining the keys to project optimisation, with research and client feedback having generated a clear understanding of the following four vital factors which greatly impact project success:

- 1 Continuity
- 2 Communication
- 3 Efficiency (Timeframe & cost)
- 4 Client focus

Above all, Wurkspace 7 is committed to aligning its project process with our Client's strategic objectives through our signature process delivery model, simply called Discover, Design, Deliver.

This 3-D initiative combines industry best practise with individual project metrics to deliver an evidence based, user centric program. Encompassing each project step, from concept through to construction, Wurkspace 7's dual approach is proven to deliver projects up to **30% faster** and **10% cheaper** than via conventional means.*

*Source, Selecting Project Delivery Systems – Victor Sanvido & Mark Konchar

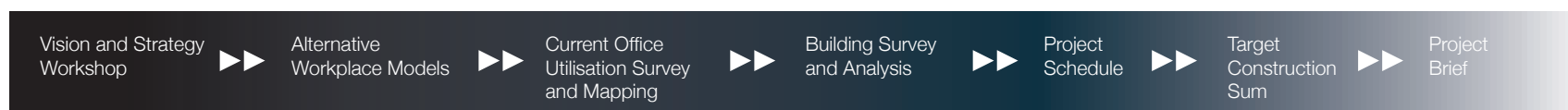
your optimum workplace - imagine the difference

Smarter
solutions
for your budget

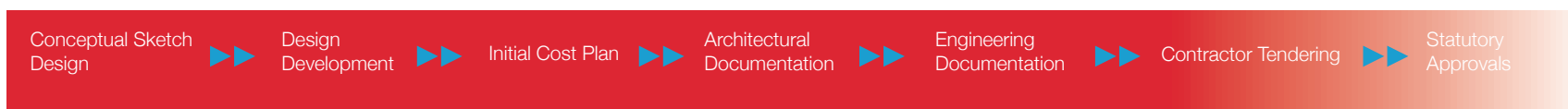
Discover - Design - Deliver

Workspace 7 Methodology

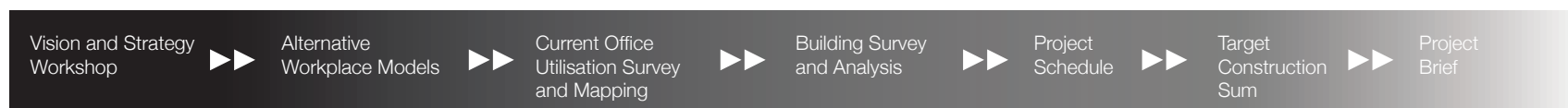
STAGE ONE - DISCOVERY



STAGE TWO - DESIGN



STAGE THREE - DELIVERY



From Concept

Using the latest in 3D modelling **Wurkspace 7** can show you the outcome in photo realistic colour before a single hammer is lifted.

This service provides a sense of spatial awareness unrivalled by other means, guaranteeing your satisfaction in the completed project.

Down to the most intricate details, like conceptualising intra-office line of sight, or visualising the sun projecting into your workspace, our skilled designers turn your vision into reality right before your eyes.

To Completion

With up to 70% of project costs determined in the design phase, **Wurkspace 7** understands the value of starting with the end in mind.

Therefore, rooted in years of relevant experience, our Project Critical Path™ has been designed to ensure every corporate project follows its optimal pathway, in order to achieve success.

By designing with the end in mind, we ensure nothing of value is overlooked, omitted or discarded.



Wurkspace 7 has revolutionized standard project delivery methods, providing significant benefits to clients through its combined Design & Construct service.

By utilising a customised agile approach, Wurkspace 7 is perfect for difficult or time sensitive commercial fit-outs. Our specialised technique and method allow us to add value to each project, through:

- Concurrent buildability assessments
- Improved budget control
- Improved project timelines
- Increased quality and risk control
- Greater value engineering
- Reduced design vs construct conflict

Design & Build

Corporate Responsibility

Safety is paramount in all areas of our business. Workspace 7's goal is to ensure no employee, contractor, client or member of the general public is exposed to, or experiences harm from our work practices.

We have a thorough understanding and adherence policy to the Work Health and Safety Act and legislation and can confirm no breaches in over 7 years.

Insurance

We are comprehensively insured to give you peace of mind Australian Insurers, Lockton and Lloyd's of London.

Cover

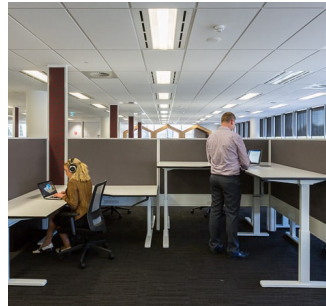
Workers Compensation \$50,000,000 | Public & Product Liability \$50,000,000 | Professional indemnity \$5,000,000



Mining Plus & Quattro PE
Industry: Mining
Delivery Model: Design + Construct



Understanding
people + work + space



Wurkspace 7 Game Changing Strategy

The gap between organisational success and failure is vast and what sets the prosperous apart from the mediocre is strategy.

Wurkspace 7 strategic consultancy called Hubb focuses on corporate flexibility, engagement and collaboration.

Hubb strategies provide clients economically viable workspace solutions and systems that have meaningful and measurable outcomes for organisations, regardless of business sphere.

If you are seeking a change in Strategy to improve results, then reach out to Wurkspace 7 for a conversation on the Business Case for change.



Workspace 7 Activity Based Working

Progressive, globally minded organisations are seeking to gain an edge on their competition. They are looking to achieve greater productivity, collaboration and efficiency utilizing less infrastructure. This goal has produced a dramatic rise in support for Alternative Working Strategies (AWS) . The most inspiring of these is Activity Based Working, or ABW.

ABW workspace strategy focuses on work being conducted in zones which are “fit for purpose” and, in doing so removing the need for individual assigned desking and other hierarchical structures like dedicated offices.

‘The tangible outcomes of ABW environments have been substantial. From reductions in spatial footprint, consumables and HR costs to improvements in staff morale, engagement and productivity.’

Like most methodologies there are differing approaches and levels of adherence. Workspace 7's internationally experienced specialists look forward to partnering with you to guide you into your ABW future.

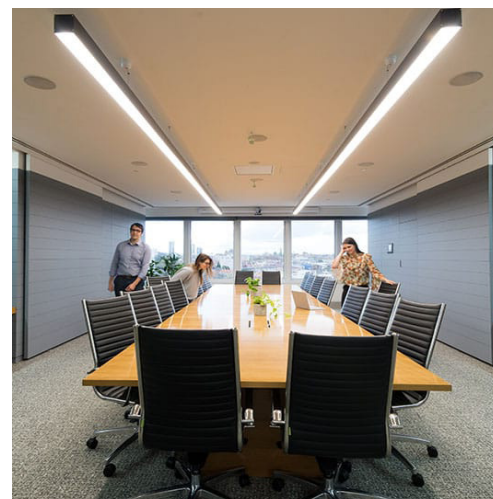


your optimum workplace - imagine the difference

The Best Places To Do Your Best Work

A photograph of a modern office interior. In the foreground, there is a glass partition with a large, teal-colored logo that reads 'OLIVIA'. The office space beyond the glass features several white rectangular tables and black chairs. A woman in a red dress is walking in the background. On the wall, there is a large framed picture of a cityscape. The ceiling has recessed linear lighting.

Recent Projects



Zenitas
Floor Area: 1500 m²
Industry: Healthcare Provider
Location: Melbourne



Recent Projects



Gallagher
Floor Area: 2300m²
Industry: Insurance
Location: Perth



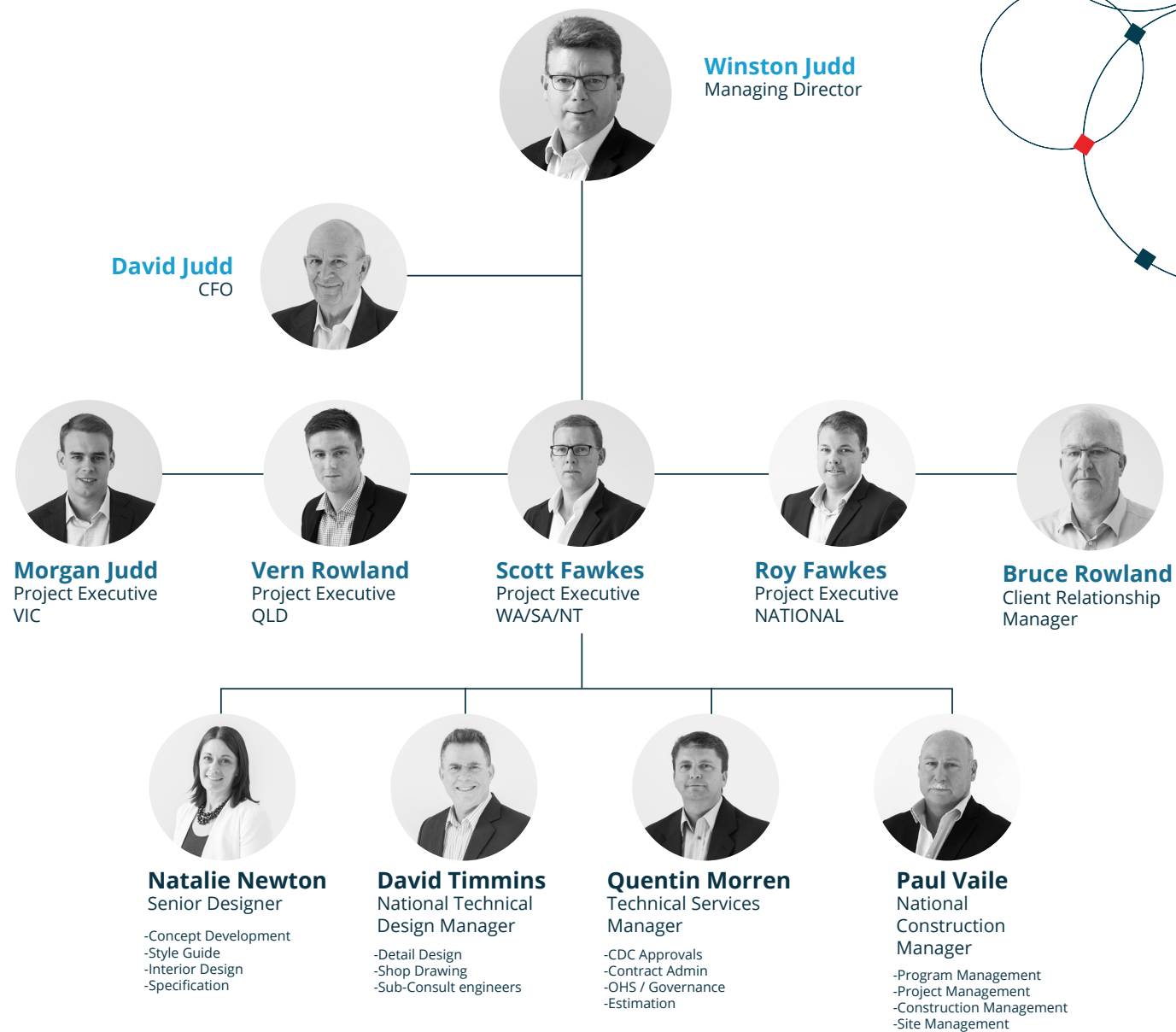
Finance Company
Floor Area: 2400m²
Industry: Finance
Location: Perth



Wurkspace 7 Team



Management Team Structure



Consultancy Team



Scott Fawkes
Project Executive
WA/SA/NT



Roy Fawkes
Project Executive
NATIONAL



Bruce Rowland
Client Relationship Manager
NATIONAL



Daniel Harrison
Business Development Manager



Morgan Judd
Project Executive
VIC/NSW



Vern Rowland
Project Executive
QLD

Client Experience Team



Cherie Thomson
Client Liaison Officer
NSW/VIC



Miranda Judd
Client Liaison Officer
WA/SA/NT



Lucinda Judd
Client Liaison Officer
NATIONAL



Georgia Rowland
Client Liaison Officer
QLD

Creative Design Team



Chloe Bader
Design Manager



Natalie Newton
Creative Design Coordinator
WA



Amanda Goonetilleke
Creative Design Coordinator
NSW/QLD



Cecilia Santos
Creative Design Coordinator
VIC



Paula Wisniewski
Creative Design Coordinator
NSW

Project Delivery Team



Quentin Morren
National Technical
Services Director



Paul Vaile
National Construction Manager



Dennis Kwok
Technical Project Manager



David Timmins
National Technical
Design Manager



Kristopher Cabanella
Technical Design Manager
VIC/NSW/QLD

Wurk**space 7**'s reach across Australia

Melbourne

Sydney

Perth

Brisbane

transformations@wurkspace7.com.au 

1800 973 836 

www.wurkspace7.com.au 

wurk**space7**
Corporate Transformations

ABN: 16127220419